



MONTHLY MEMBERSHIP PROGRESS REPORT

District 42

Results as of: 10/31/2018

GMT: MAHESH CHITNIS

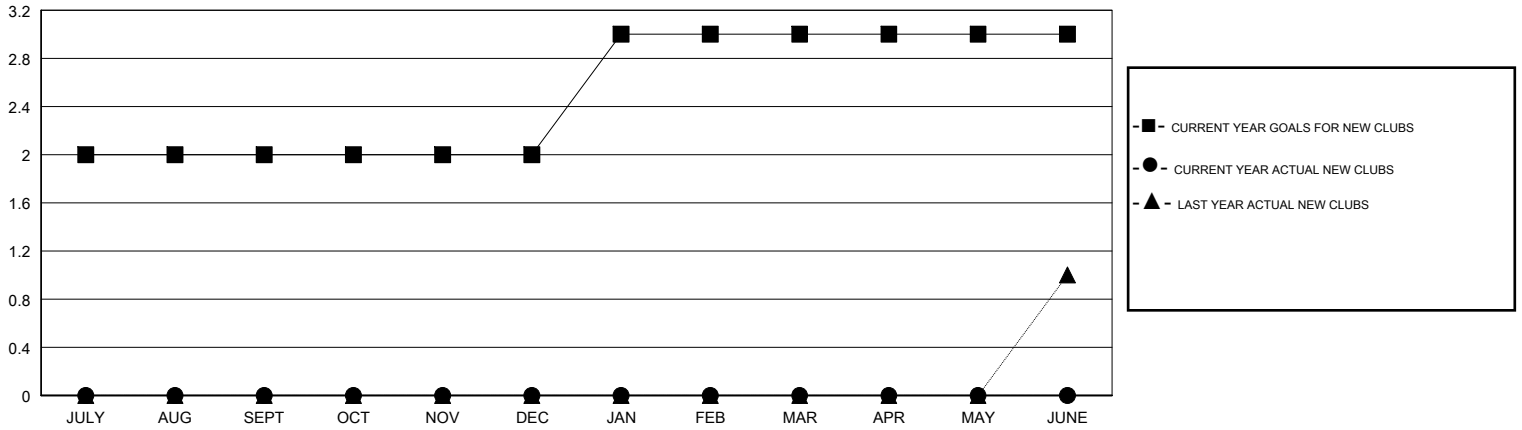
LOCATION RHODE ISLAND

GMT CA

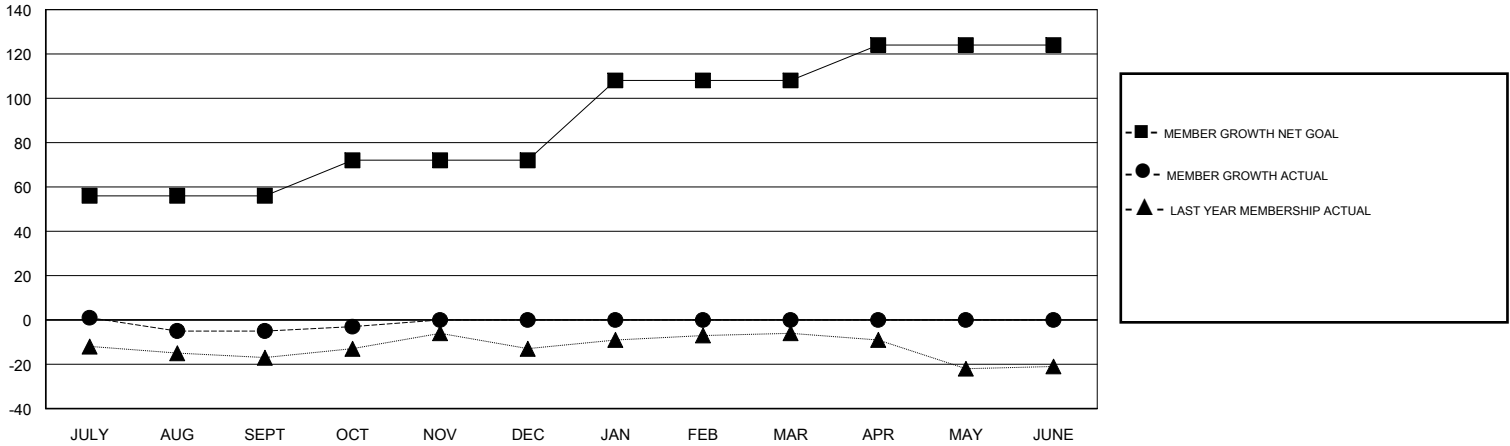
Clubs			
RESULTS FOR 2018-2019			
QUARTER	NEW CLUB GOAL	NEW CLUBS	DROPPED CLUBS
JULY/AUG/SEPT	2	0	0
OCT/NOV/DEC	0	0	0
JAN/FEB/MAR	1	0	0
APR/MAY/JUNE	0	0	0

Members			
RESULTS FOR 2018-2019			
QUARTER	MEMBER GROWTH NET GOAL	MEMBER GROWTH ACTUAL	DROPPED MEMBERS ACTUAL (including transfers)
JULY/AUG/SEPT	56	10	14
OCT/NOV/DEC	16	8	6
JAN/FEB/MAR	36	0	0
APR/MAY/JUNE	16	0	0

GOALS AND ACTUAL NEW CLUBS CUMULATIVE



GOALS AND ACTUAL MEMBERS CUMULATIVE



DROPPED CLUBS: 0	8 CLUBS OF 30 ADDED 1 OR MORE NEW MEMBERS	<u>GENDER DISTRIBUTION</u> MALE 809 (71.72%) FEMALE 319 (28.28%) Women Percentage Fiscal Year Goal: 30%
DROPPED MEMBERS DECEASED 2 CLUB CANCELLED 0 OTHER 18 TOTAL 20	CLICK HERE FOR CUMULATIVE MEMBERSHIP DATA	TOTAL FAMILY UNIT MEMBERS 138 FAMILY MEMBERS PAYING HALF DUES 73